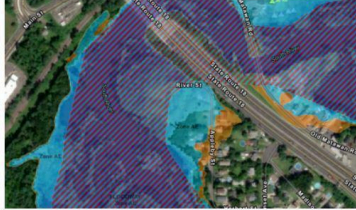


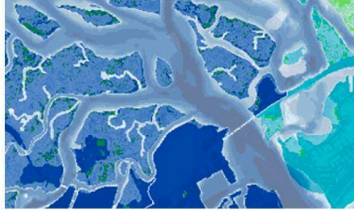
# NJ Datasets for Climate Change Education

Learn how to integrate New Jersey-specific datasets into existing curricula to effectively address the **NJ Climate Change Student Learning Standards** and engage students in meaningful learning!



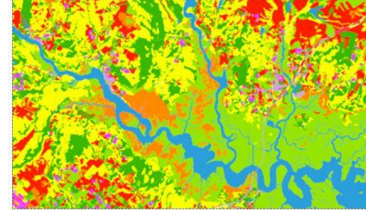
Local Planning Navigator

A decision-support tool for building community resilience



NJ FloodMapper

An interactive flood exposure data mapping tool



NJ Forest Adapt

A data mapping tool for forest management

## Adapting OpenSciED Curriculum

This webinar will highlight how science teachers can integrate NJ-specific datasets into OpenSciEd curriculum to address the NJ Climate Change Student Learning Standards and engage students by exploring information relevant to their daily lives. Presenters will share supplementary materials developed by Rutgers Center for Mathematics, Science, and Computer Education and Sustainable Jersey for OpenSciEd's Unit 7.6. *Earth's Resources & Human Impact* as a model.

**May 2, 2024, 3:30pm - 5:00pm**

[Register](#)

**NOTE: This event was originally scheduled for April 15, 2024.**

